

Material & Application



Model/Gray

Layer thickness: 50µm
(Printing time: 1hr 30min)



Model/Peach

Layer thickness: 100µm
(Printing time: 40min)



Cast

Layer thickness: 50µm
(Printing time: 1hr10min)



C & B

Layer thickness: 100µm
(Fast Mode Printing time: 20min)



Denture

Layer thickness: 100µm
(Printing time: 2hr 30min)



Splint

Layer thickness: 100µm
(Printing time: 2hr 30min)



SG

Layer thickness: 100µm
(Printing time: 1hr)

※ All these dental prosthesis were printed on D2 Series using materials developed by **Veltz3D**

Compatible materials



DETAX

HEPHZIBAH®

CONTACT US

+82-32-509-5822 Fax.+82-32-502-5519 peter@hdtek.com

(22121)86, Gilpa-ro 71beon-gil, Michuhol-gu, Incheon, Korea



Veltz www.veltz3d.com

Copyright © 2019 Hephzibah company. All rights Reserved.
Designs and specifications of products are subject to change without prior notice for the improvements.
The colors of products may be different due to the printing process.

Reliable
Simple
Compatible!

Korea FTA
AEX

MADE IN KOREA

Veltz
3D

Professional Digital Dentistry
DLP 3D Printer for Dental **D2**

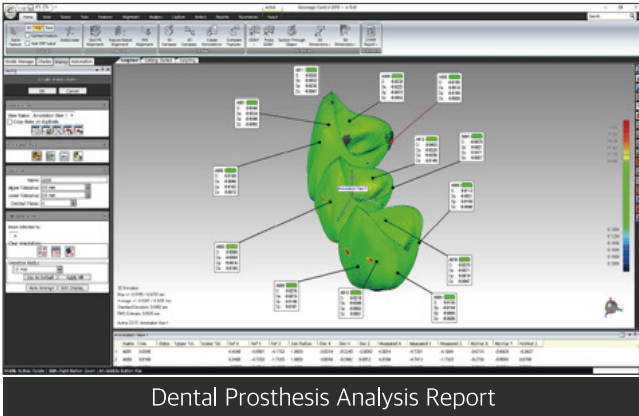


SINCE 1986

HEPHZIBAH

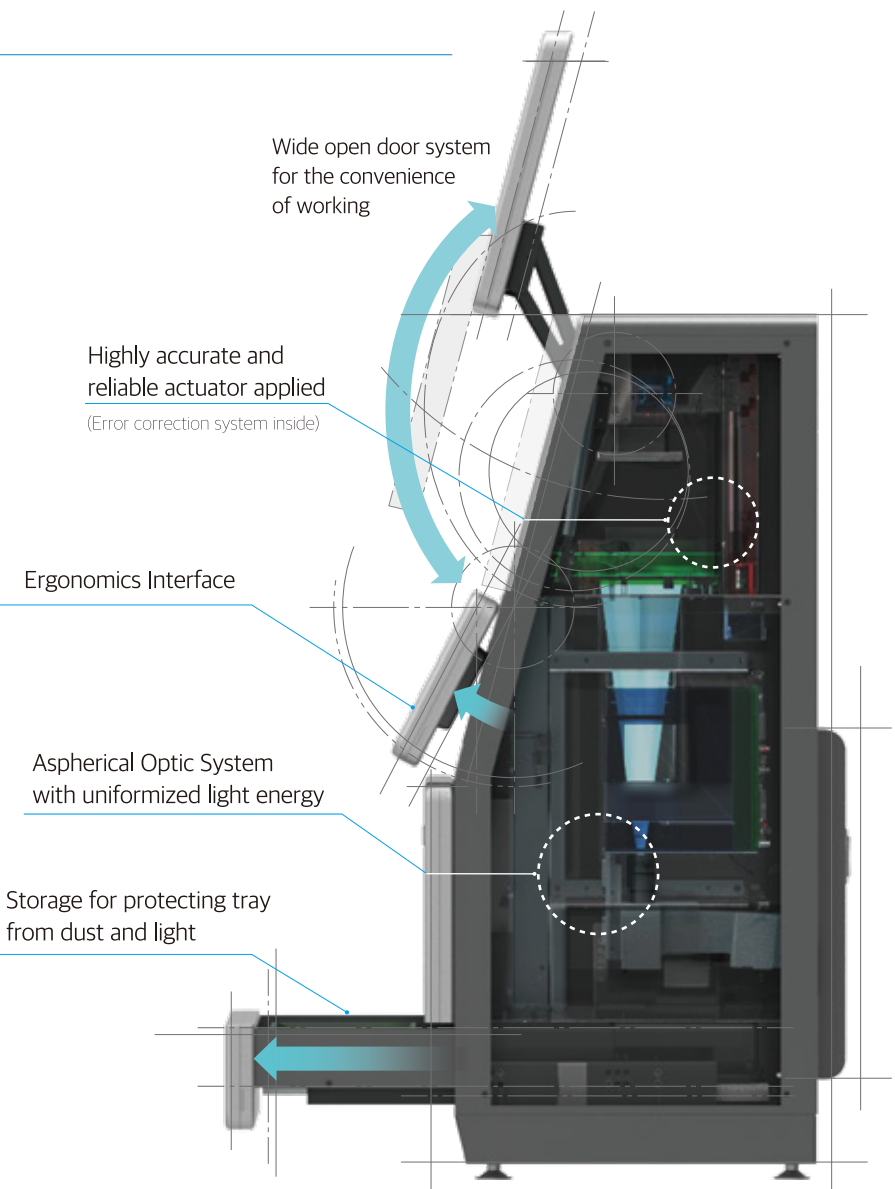
Distinct Advantage

“ Qualified Accuracy and Repeatability ”



D2 is manufactured using digital calibration systems, all of which are individually manufactured to ensure the highest level of accuracy.

Outstanding Features



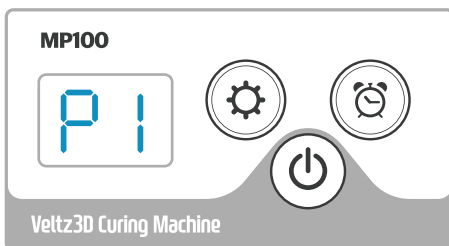
D2 Specifications

Model	D2-120	D2-150
Layer Thickness	25 ~ 100 μm	
Build size	120(W) X 67.5(D) X 100(H) [mm]	150(W) X 84.3(D) X 100(H) [mm]
Printing speed	Up to 40mm/h (Vertical direction)	
Optical engine	1920 X 1080 (Full HD), 405nm UV LED	
XY resolution	62.5 μm	78.1 μm
Power	100~240 Vac, 50/60Hz / Approx. 150W	
Dimension/Wt.	320(W) X 420(D) X 870(H) mm / Approx. 35kg	

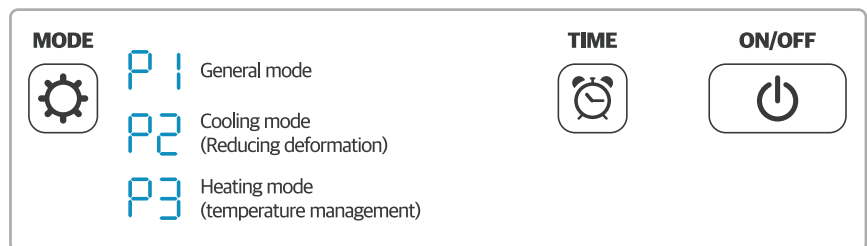


MP100 / Post Curing Machine (UV curing light)

FDA Class II resins applicable (Perfect curing performance with wide range of wavelength)
Guarantees the quality with the optimized mode for the specified resins



▲ soft touch switch



▲ mode information

Specifications

Item	Post Curing Machine (MP100)
Light	Metal UV lamp
Size	220x380x150mm(WxDxH)
Tray size	173x140x25mm(WxDxH)
Power	220Vac, 50/60Hz, 1ph, 74W
Weight	6kg
Package	Tray, User's manual, Power cable



Partners



SEHA NATIONAL UNIVERSITY
DENTAL HOSPITAL

bio M MYEONG MOON
DENTAL CO., LTD.



JANG BEAK
DENTAL LABORATORY

ora clear



KEITI KOREA ELECTRONICS
TECHNOLOGY INSTITUTE



AEKYUNG

materialise



Autodesk
NETFABB